

ST. MATTHEW'S EPISCOPAL CHURCH

CONNECTIONS NEWSLETTER
APRIL 2024



Monthly Newsletter



- | | |
|------------------------------|------------------------------|
| Day 1: Psalm 37:7-9 | Day 16: 1 Corinthians 13:4-7 |
| Day 2: Jeremiah 29:11-14 | Day 17: James 1:19-20 |
| Day 3: Romans 12:12-13 | Day 18: Romans 5:2-5 |
| Day 4: Philippians 4:5-7 | Day 19: 2 Timothy 2:24-26 |
| Day 5: Isaiah 40:30-31 | Day 20: James 1:2-4 |
| Day 6: Ecclesiastes 7:8-9 | Day 21: Colossians 1:11-12 |
| Day 7: James 5:7-8 | Day 22: Hebrews 10:35-36 |
| Day 8: 1 Timothy 1:15-16 | Day 23: Proverbs 16:32 |
| Day 9: Romans 5:3-5 | Day 24: Luke 21:17-19 |
| Day 10: 1 Thessalonians 5:14 | Day 25: Psalm 130:3-6 |
| Day 11: Ephesians 4:1-3 | Day 26: Luke 8:15 |
| Day 12: Psalm 37:7-8 | Day 27: Colossians 3:12-14 |
| Day 13: 2 Corinthians 6:4-6 | Day 28: Proverbs 25:15 |
| Day 14: Galatians 6:9-10 | Day 29: Hebrews 6:10-12 |
| Day 15: Romans 8:24-25 | Day 30: Romans 2:6-8 |

*Commit to spending 10 minutes every day to meditate and reflect on God's Word.
Write down what you have gleaned from each day's scripture.*



Bible Reading Plan

*A Bible reading plan
for the month of
April. This month
will focus on
Patience.*

MINISTRIES & EVENTS

A note from Father John:

Buen Camino!



St. Matthew's Family -
As you know, I will be on sabbatical from Monday, April 1st through Sunday, July 9th. During this time, I will not have access to voicemail, text messages, or email, so if you are in need of anything, please get in touch with Gina or our Senior Warden, Mike Frickenschmidt. (As this newsletter is posted online, I am not posting their contact information here, so please see your directory.)

It is challenging to plan for all scenarios, but we have done our best to mitigate any disruption to pastoral needs and church-related activities.

Finally, please do not become a victim of any scams. I have provided a "safe word" to specific individuals that I would contact in the event of an emergency. If in doubt, contact Gina or Mike.

If you would like to follow along with the pilgrimage, visit www.johnftoles.com and sign up to receive email updates.

Sabbatical Committee

Members:

Diane Fosmire
Gina Rich
Dora Baker
Erica Roark
Elizabeth Allen

Pastoral Emergency Contacts:

Diane Fosmire
Andy Fosmire

Facility Issues

Mike Frickenschmidt
Michael Baker

The church's website contains good information, including a calendar of upcoming activities and other resources. Please visit the site to find the answer to most questions: www.stmatthewsenid.org.





Game Night!

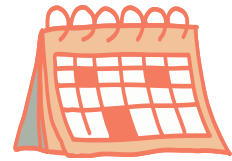
Join us for a fun evening of Bingo!

Wednesday
April 3 / 6:30 p.m.



April Meetings

Vestry Meeting
Sunday / April 14
Noon



Let's get
Social!

Conversation & Connections

Join us Wednesday evenings in April for dinner and conversations.
We will be talking about prayer and pilgrimage.
These will be casual conversations on how to improve your prayer life.

Wednesday / April 10
Wednesday / April 17
Wednesday / April 24
@ 5:30 p.m.

Youth Activities



Kids Night Out
Friday, April 19
5:00 p.m.

Holy Happy Hour



FRIDAY
APRIL 19
5:30 P.M.

March 31 through July 14:
There will be a
10:00 a.m. service only.





APRIL

Sunday	Monday	Tuesday	Wednesday	Thursday	Friday	Saturday
31 Easter Sunday - 10:00AM Eucharist - 11:00AM Easter Egg Hunt & Reception	1	2	3 - 12:15PM Noonday Prayers - 1:00PM Lunch Bunch - 6:30PM Game Night / Roark	4 - 11:00AM Yoga - 1:00PM ESL - 5:45PM Choir Practice	5	6
7 Easter 2 - 9:15AM Book of Ruth / Loewen - 10:00AM Eucharist - 11:00AM Compass Youth Hour	8	9	10 - 12:15PM Noonday Prayers - 1:00PM Lunch Bunch - 5:30PM Conversation & Connections	11 - 11:00AM Yoga - 1:00PM ESL - 5:45PM Choir Practice	12	13
14 Easter 3 - 9:00AM Fellowship Hour - 10:00AM Eucharist - 11:00AM Compass Youth Hour - 12:00PM Vestry	15	16	17 - 12:15PM Noonday Prayers - 1:00PM Lunch Bunch - 5:30PM Conversation & Connections	18 - 11:00AM Yoga - 1:00PM ESL - 5:45PM Choir Practice	19 - 5:00PM KNO - 5:30PM Holy Happy Hour	20
21 Easter 4 - 9:15AM Book of Ruth / Loewen - 10:00AM Eucharist - 11:00AM Compass Youth Hour	22	23	24 - 12:15PM Noonday Prayers - 1:00PM Lunch Bunch - 5:30PM Conversation & Connections	25 - 11:00AM Yoga - 1:00PM ESL - 5:45PM Choir Practice	26	27
28 Easter 5 - 9:15AM Book of Ruth / Loewen - 10:00AM Morning Prayer - 11:00AM Brunch - 11:00AM Compass	29	30	1 - 12:15PM Noonday Prayers - 1:00PM Lunch Bunch - 6:30PM Game Night / Kendall	2 - 11:00AM Yoga - 1:00PM ESL - 5:45PM Choir Practice	3	4

ENGLISH
as a
SECOND LANGUAGE



Weekly classes
offered at St.
Matthew's

Chair
Yoga



**St. Matthew's
Episcopal Church**
518 W. Randolph Ave.
Enid, OK 73701
www.stmatthewsenid.org
(580) 237-4737

The Rev. Dr. John Toles, Rector
(580) 370-1472
fr.john.toles@me.com

Gina Rich
Parish Administrator
(580) 237-4737
stm.enid@icloud.com

Treasurer
stm.treasurer@icloud.com

LET'S HAVE BRUNCH!

APRIL 28 • 11 A.M.



BRING A DISH FOR BRUNCH AND
JOIN US FOR A POTLUCK!

SIGN UP LIST WILL BE IN THE PARISH HALL